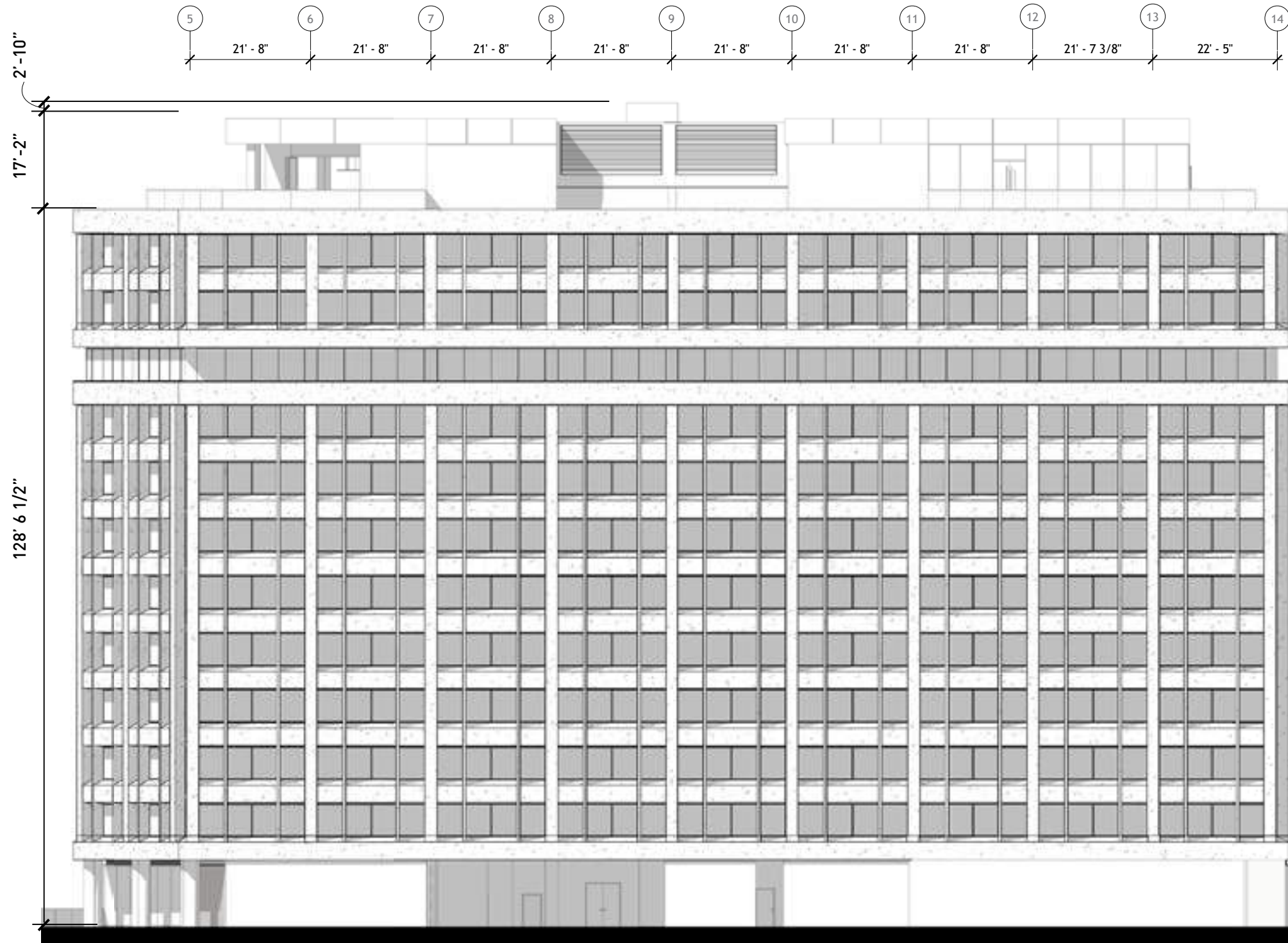
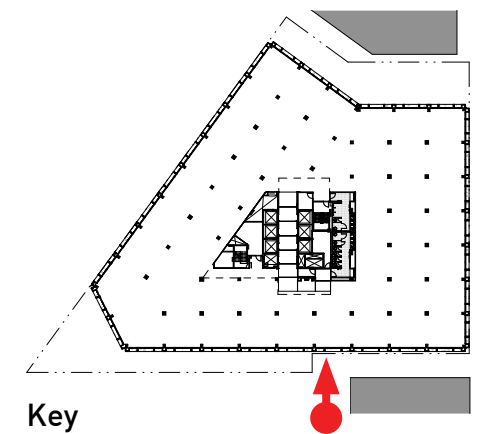


1333 New Hampshire Avenue

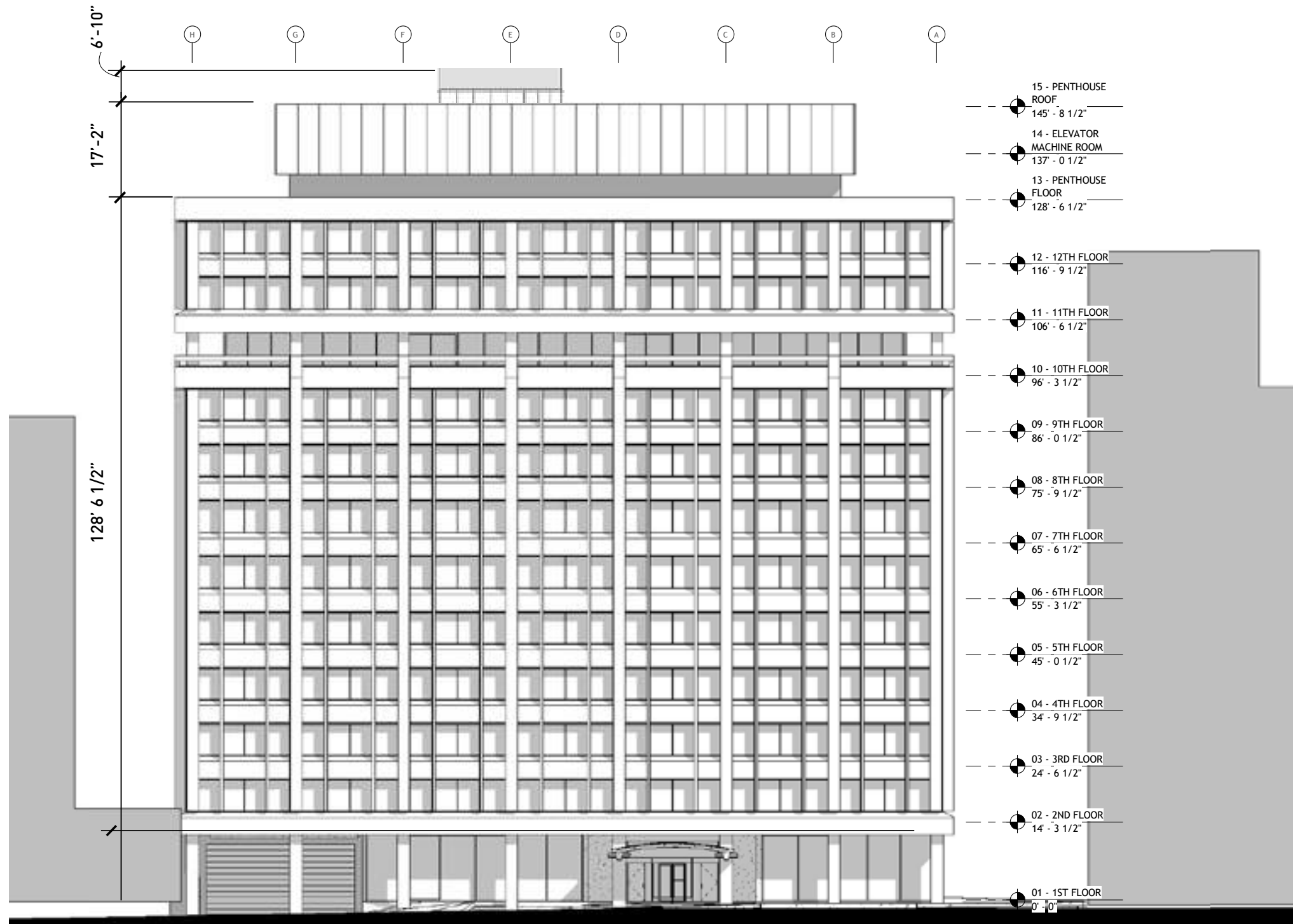


- 14 - PENTHOUSE ROOF
145' - 8 1/2"
- 16 - ELEVATOR MACHINE ROOM
137' - 0 1/2"
- 13 - PENTHOUSE FLOOR
128' - 6 1/2"
- 12 - 12TH FLOOR
116' - 9 1/2"
- 11 - 11TH FLOOR
106' - 6 1/2"
- 10th FLOOR
96' - 3 1/2"
- 9TH FLOOR
86' - 0 1/2"
- 8TH FLOOR
75' - 9 1/2"
- 07 - 7TH FLOOR
65' - 6 1/2"
- 06 - 6TH FLOOR
55' - 3 1/2"
- 05 - 5TH FLOOR
45' - 0 1/2"
- 04 - 4TH FLOOR
34' - 9 1/2"
- 03 - 3RD FLOOR
24' - 6 1/2"
- 02 - 2ND FLOOR
14' - 3 1/2"
- 01 - 1ST FLOOR
0' - 0"

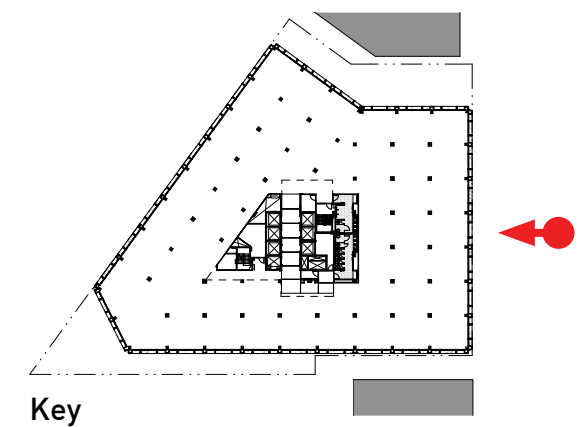


Proposed South Elevation

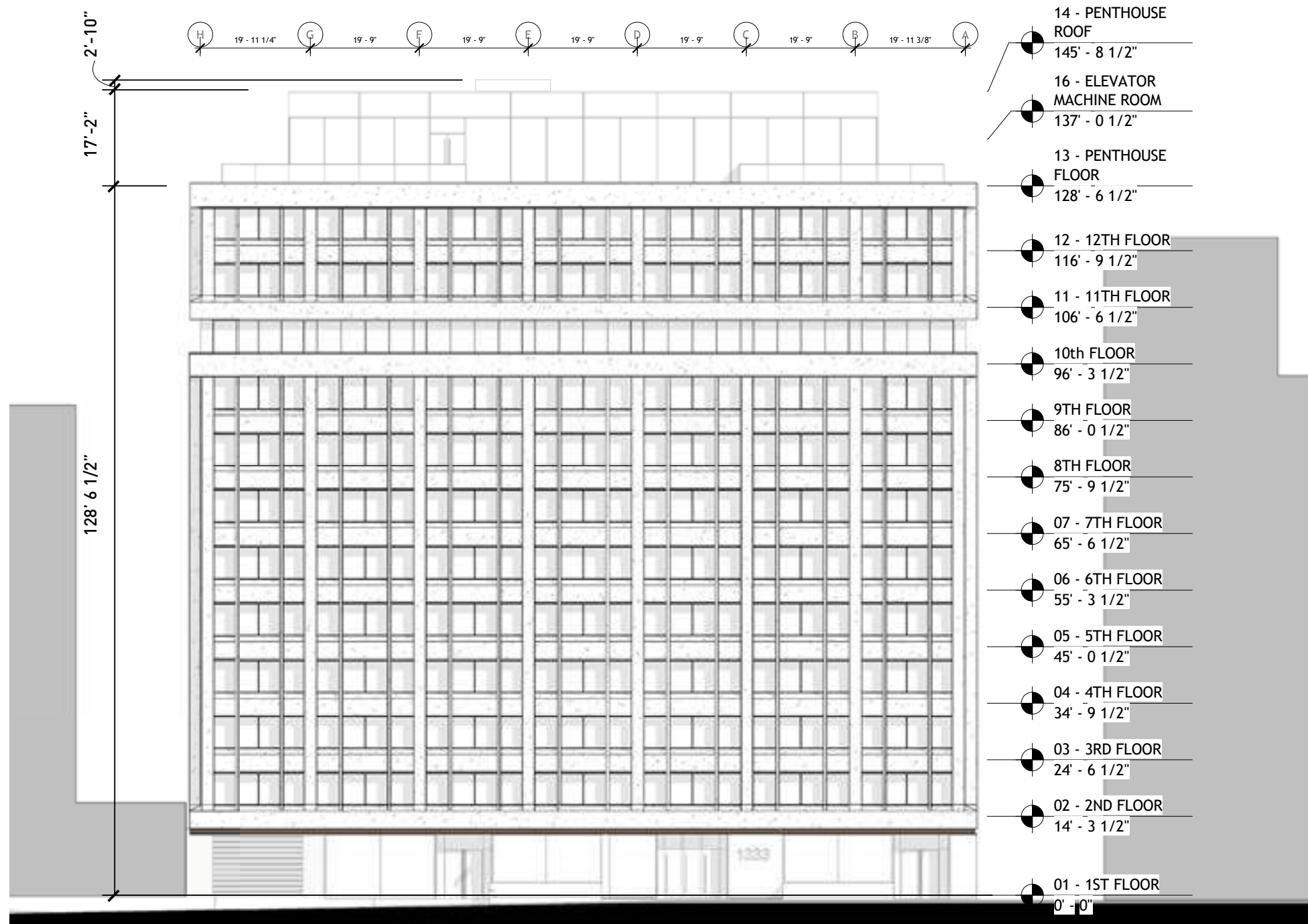
1333 New Hampshire Avenue



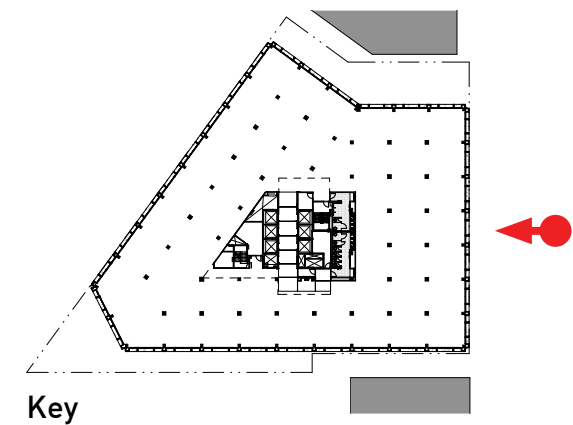
Existing East Elevation



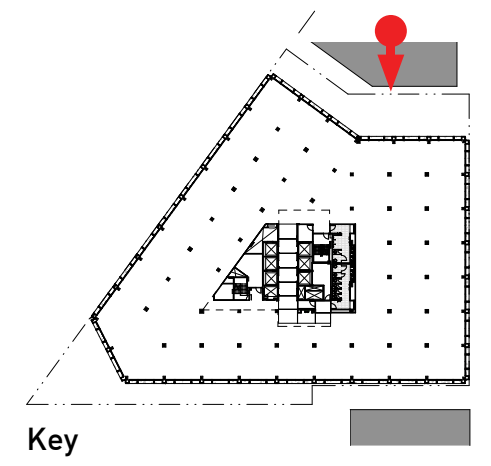
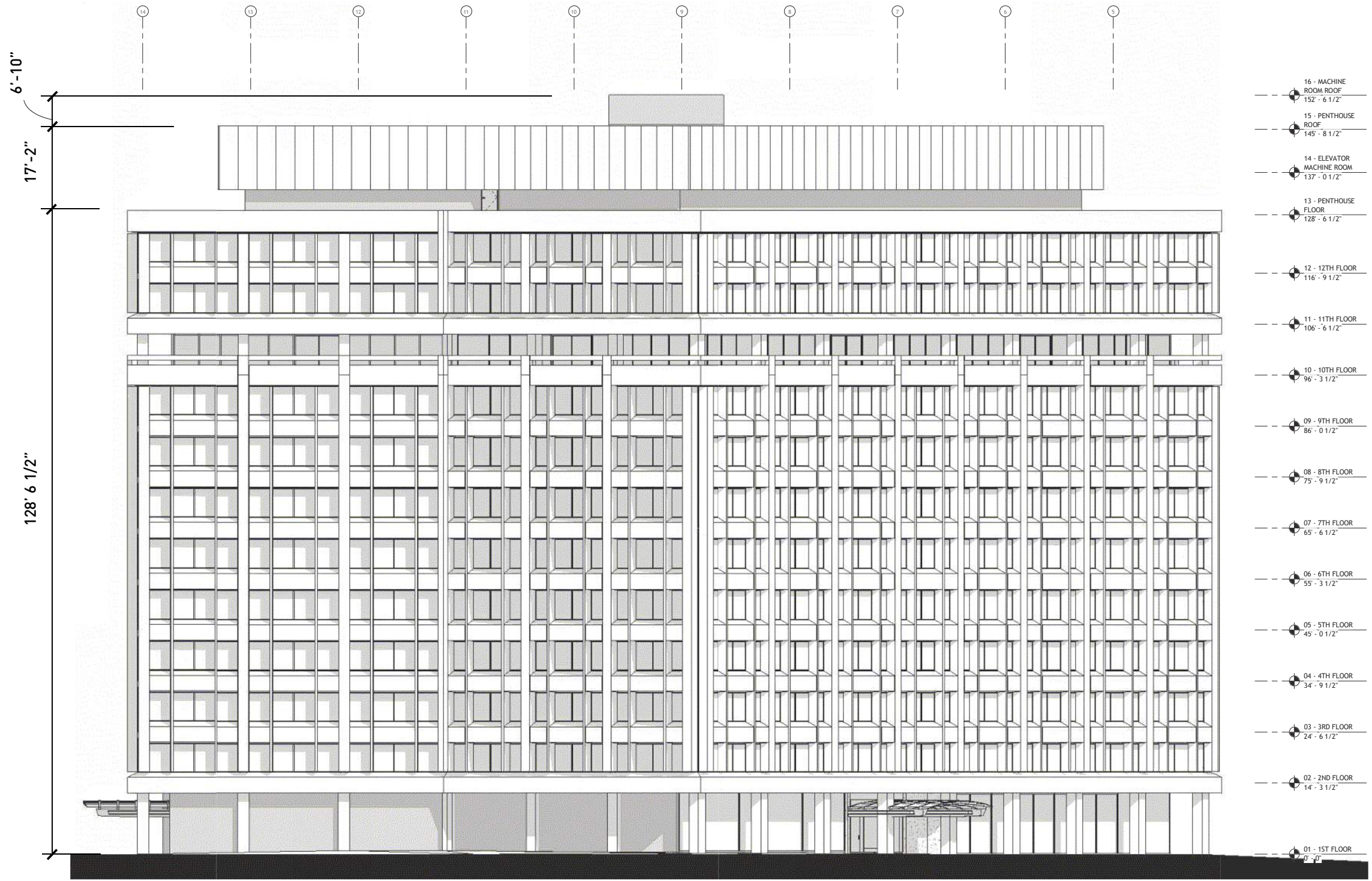
1333 New Hampshire Avenue



Proposed East Elevation



1333 New Hampshire Avenue



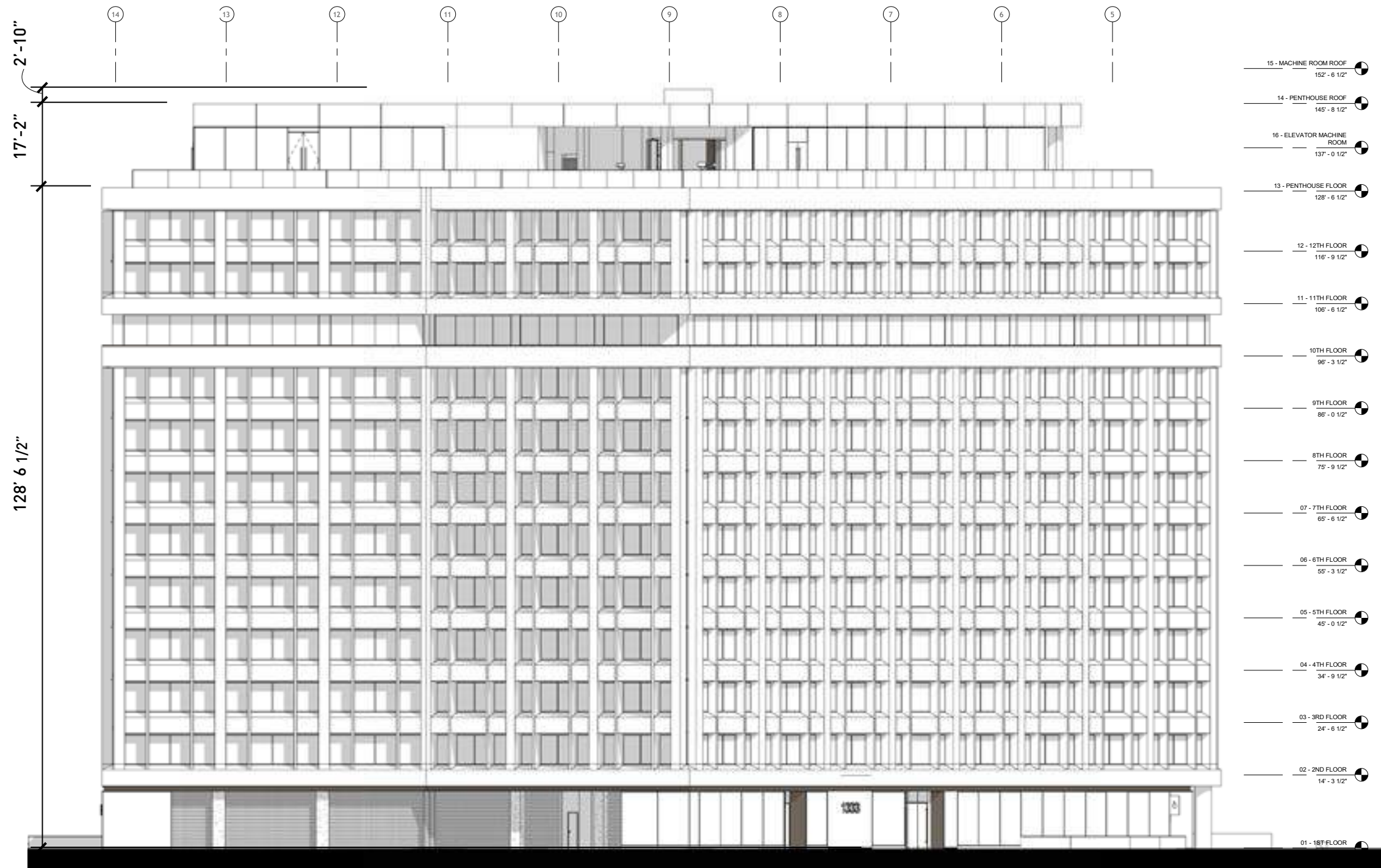
Existing North Elevation

July 23, 2019

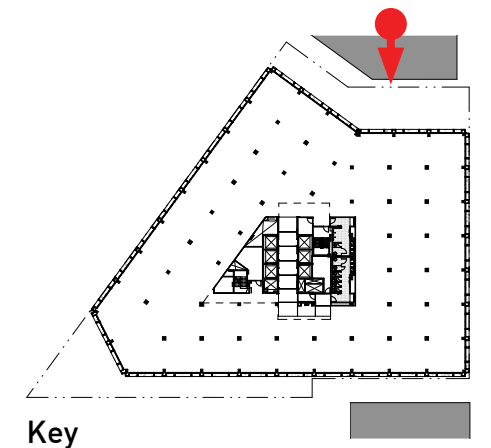


FOX Architects
 1240 22nd Street, NW
 Washington, DC 20037
 T 202.659.0929

1333 New Hampshire Avenue

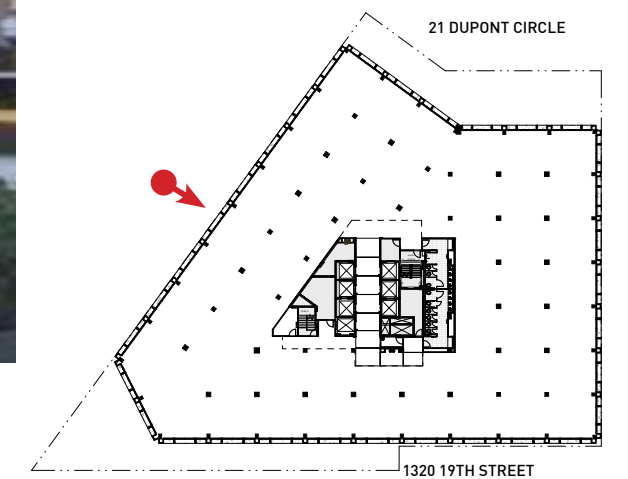


- 15 - MACHINE ROOM ROOF
152' - 6 1/2"
- 14 - PENTHOUSE ROOF
145' - 8 1/2"
- 16 - ELEVATOR MACHINE ROOM
137' - 0 1/2"
- 13 - PENTHOUSE FLOOR
128' - 6 1/2"
- 12 - 12TH FLOOR
116' - 9 1/2"
- 11 - 11TH FLOOR
106' - 6 1/2"
- 10TH FLOOR
96' - 3 1/2"
- 9TH FLOOR
86' - 0 1/2"
- 8TH FLOOR
75' - 9 1/2"
- 07 - 7TH FLOOR
65' - 6 1/2"
- 06 - 6TH FLOOR
55' - 3 1/2"
- 05 - 5TH FLOOR
45' - 0 1/2"
- 04 - 4TH FLOOR
34' - 9 1/2"
- 03 - 3RD FLOOR
24' - 6 1/2"
- 02 - 2ND FLOOR
14' - 3 1/2"
- 01 - 1ST FLOOR



Proposed North Elevation

1333 New Hampshire Avenue



Key

N

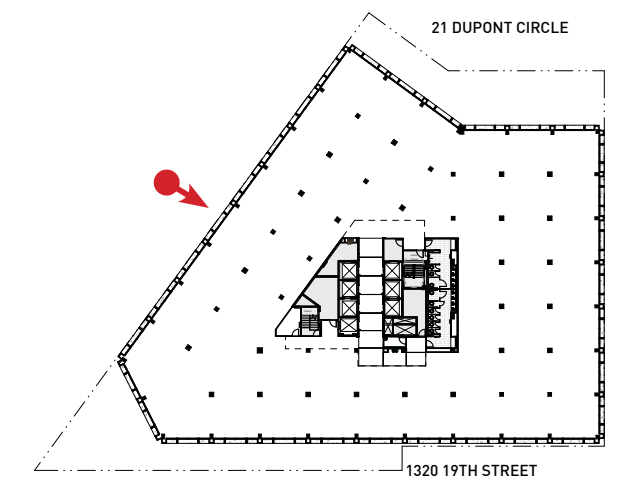


July 23, 2019

Existing New Hampshire Avenue Storefront



1333 New Hampshire Avenue



Key

N

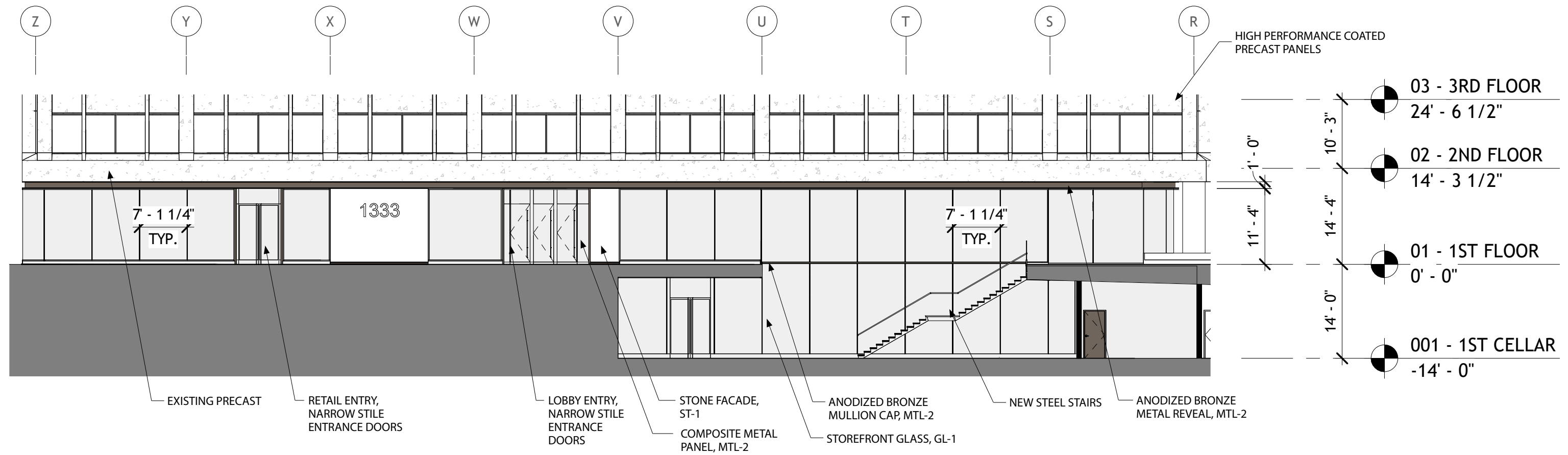


July 23, 2019

New Hampshire Avenue Storefront



1333 New Hampshire Avenue



INSULATED GLASS
Low Iron Ultra Clear GL-1



EXTERIOR METAL
MTL-2



STOREFRONT BASE & MULLIONS
MTL-3

New Hampshire Ave: Storefront & Finishes



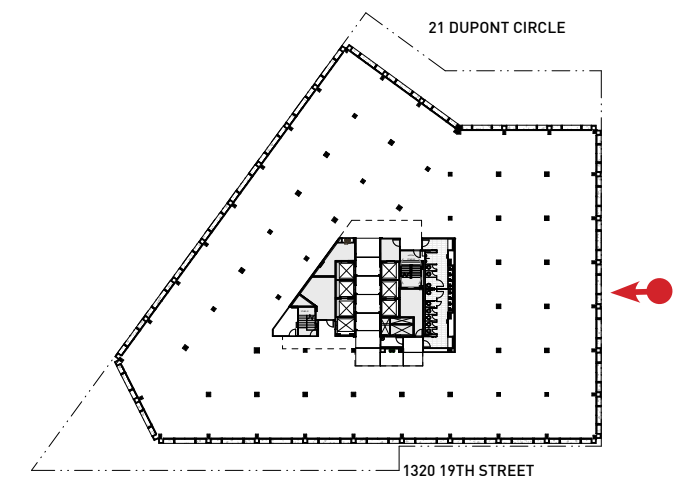
July 23, 2019



1333 New Hampshire Avenue



Perspective: Existing 19th Street Storefront



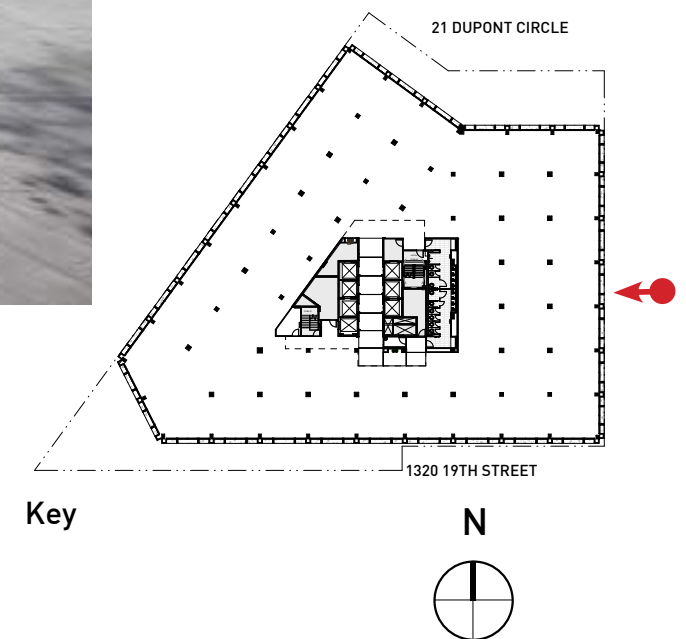
Key



July 23, 2019

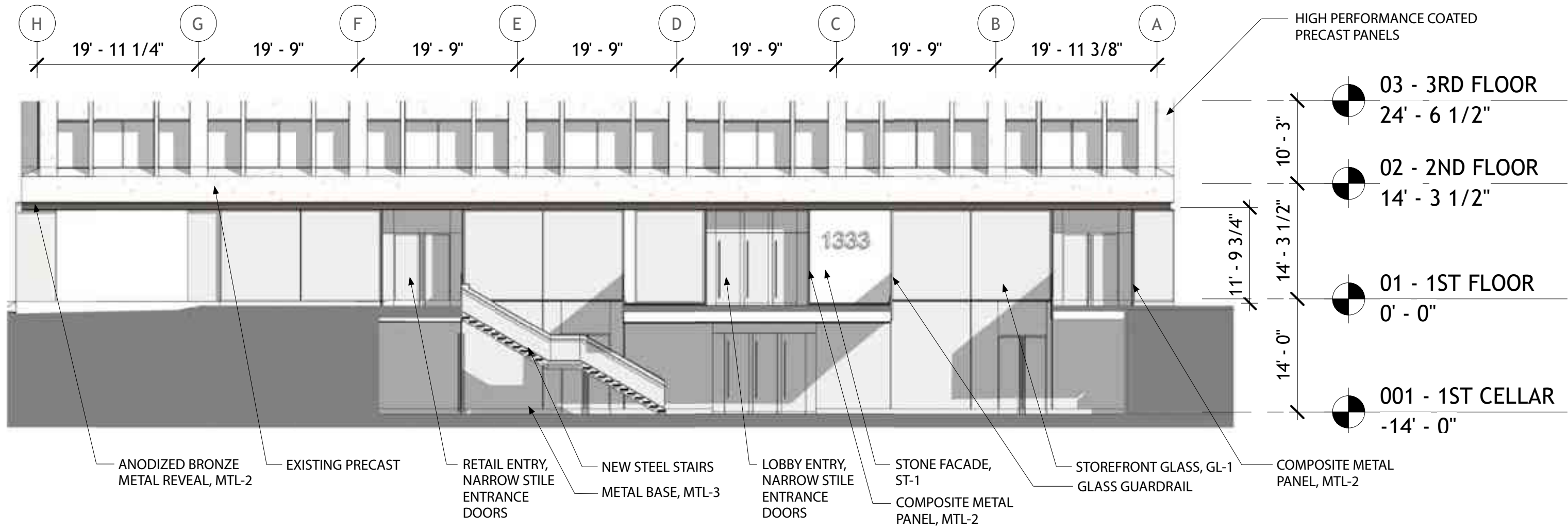


1333 New Hampshire Avenue



Perspective: 19th Street Storefront

1333 New Hampshire Avenue



INSULATED GLASS
Low Iron Ultra Clear GL-1



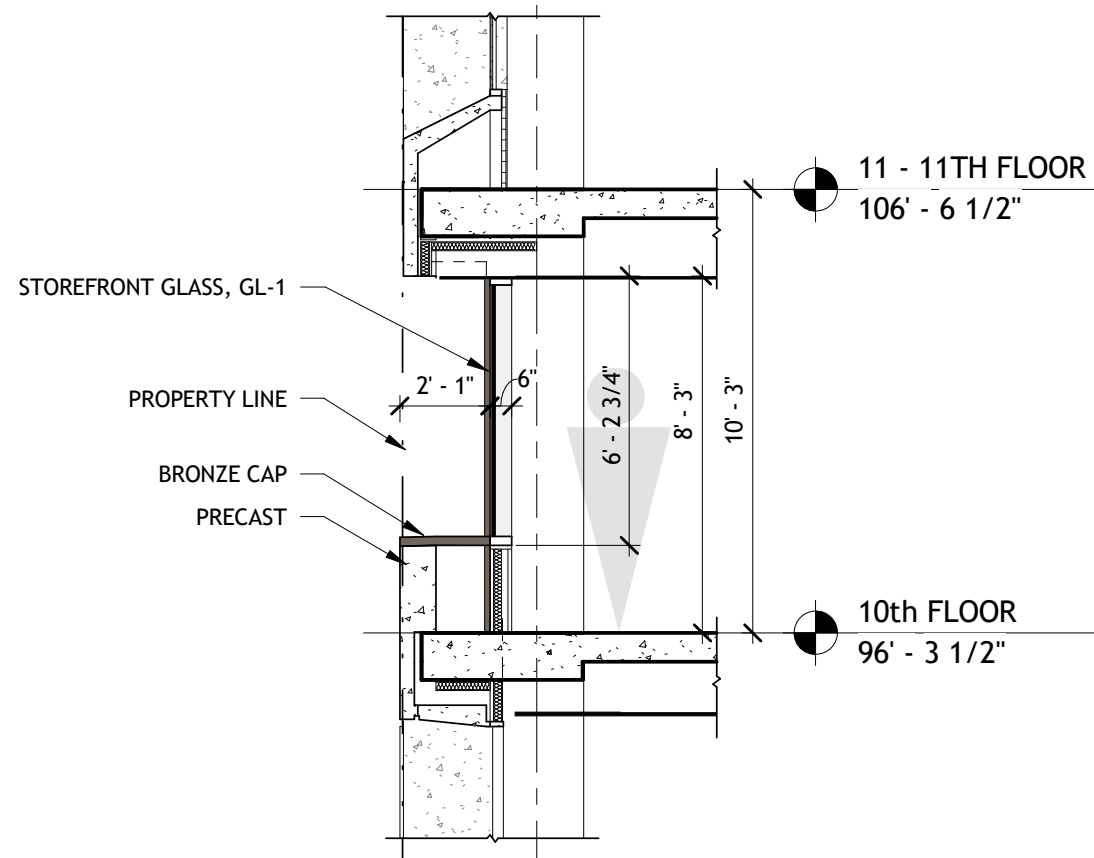
EXTERIOR METAL
MTL-2



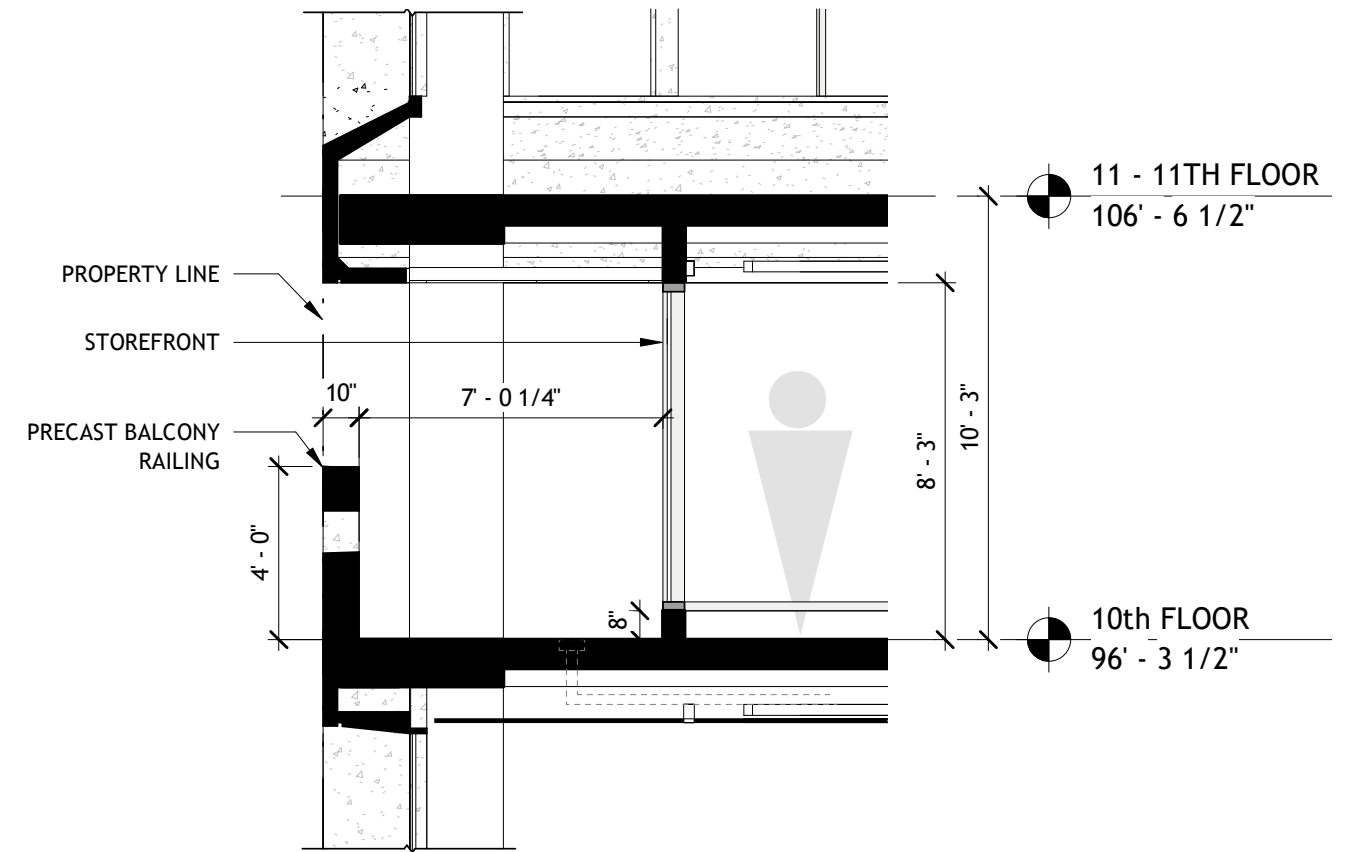
STOREFRONT BASE & MULLIONS
MTL-3

19th Street: Storefront & Finishes

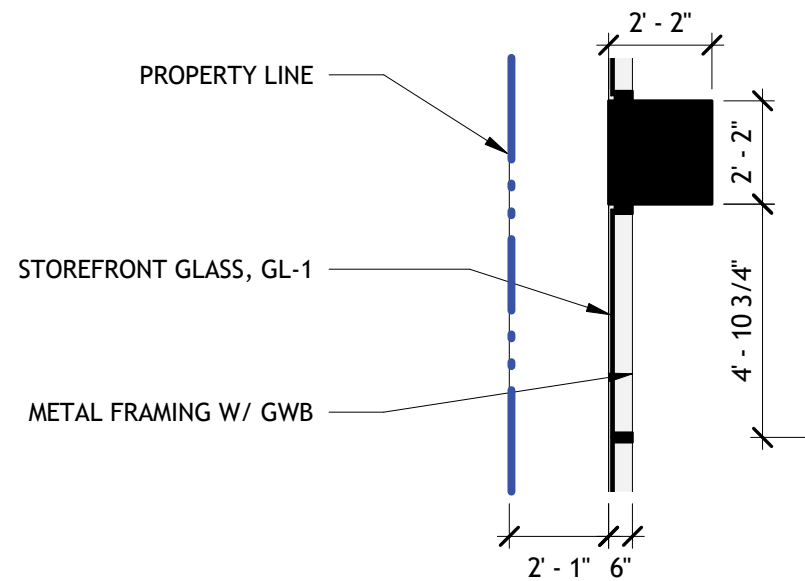
1333 New Hampshire Avenue



Proposed Section



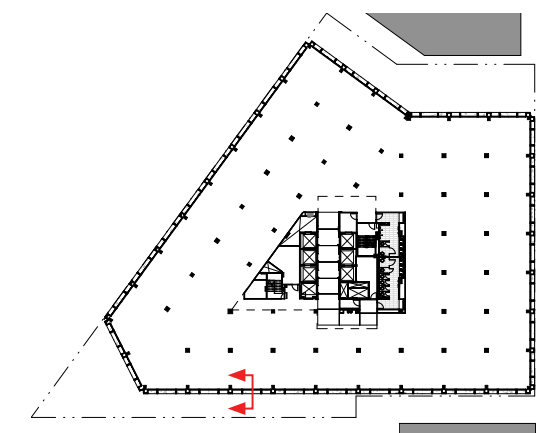
Existing Section



Proposed Detail Plan



Key Elevation



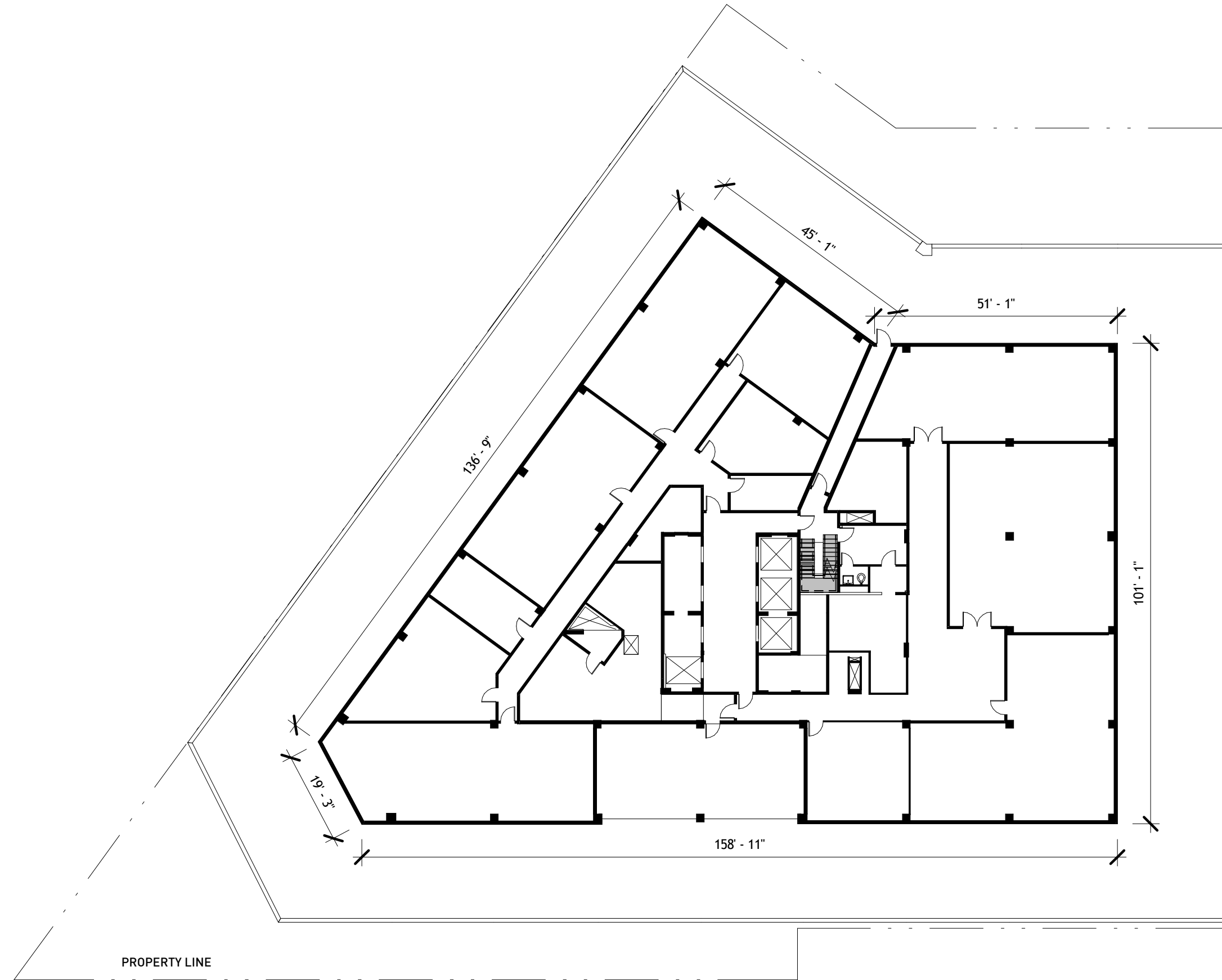
Key Plan

Building Facade - 10th Floor

SCALE: 1/4"=1'-0"

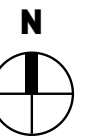
July 23, 2019





PROPERTY LINE

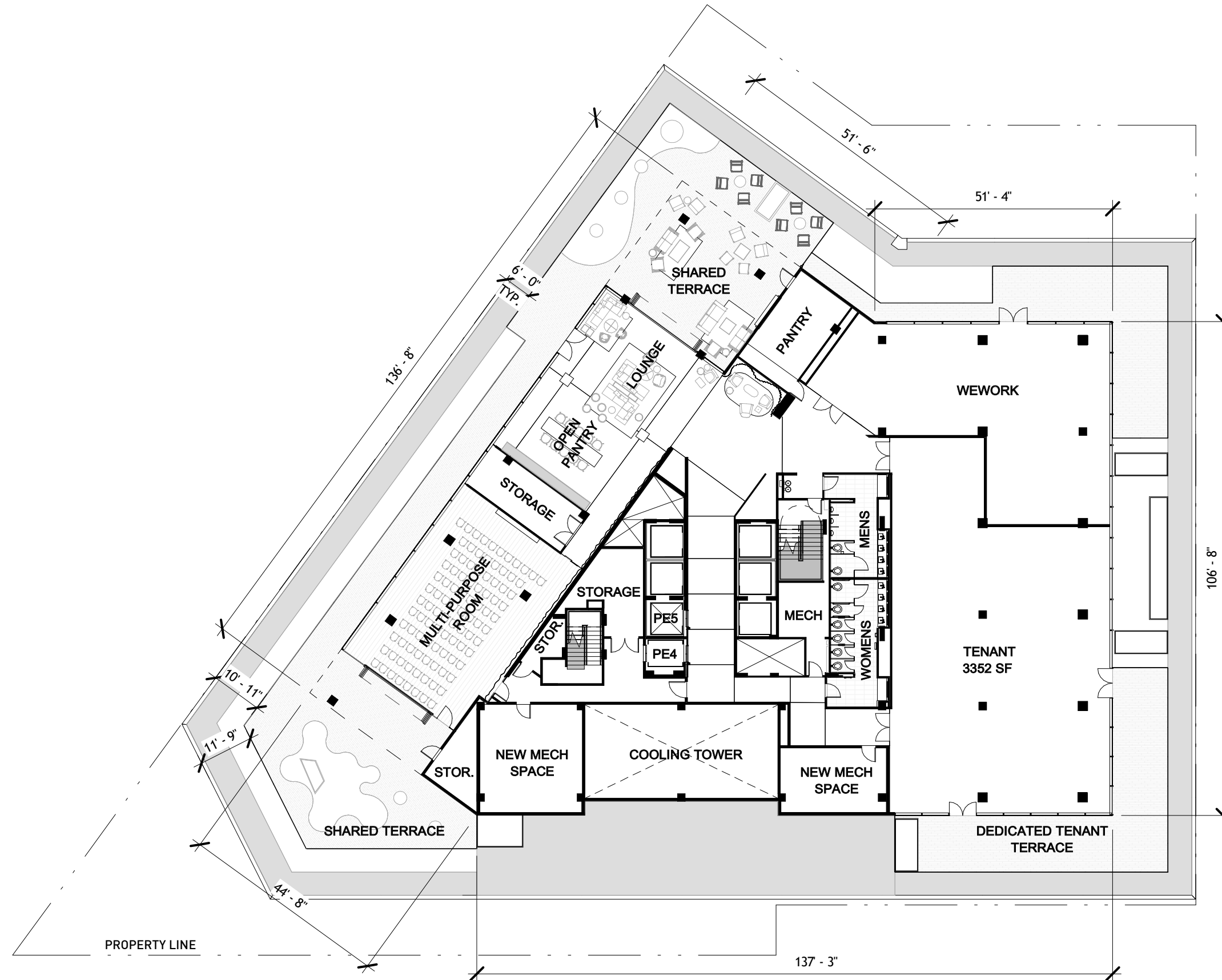
Existing Penthouse Floor Plan



July 23, 2019



FOX Architects
1240 22nd Street, NW
Washington, DC 20037
T 202.659.0929



Proposed Penthouse Floor Plan

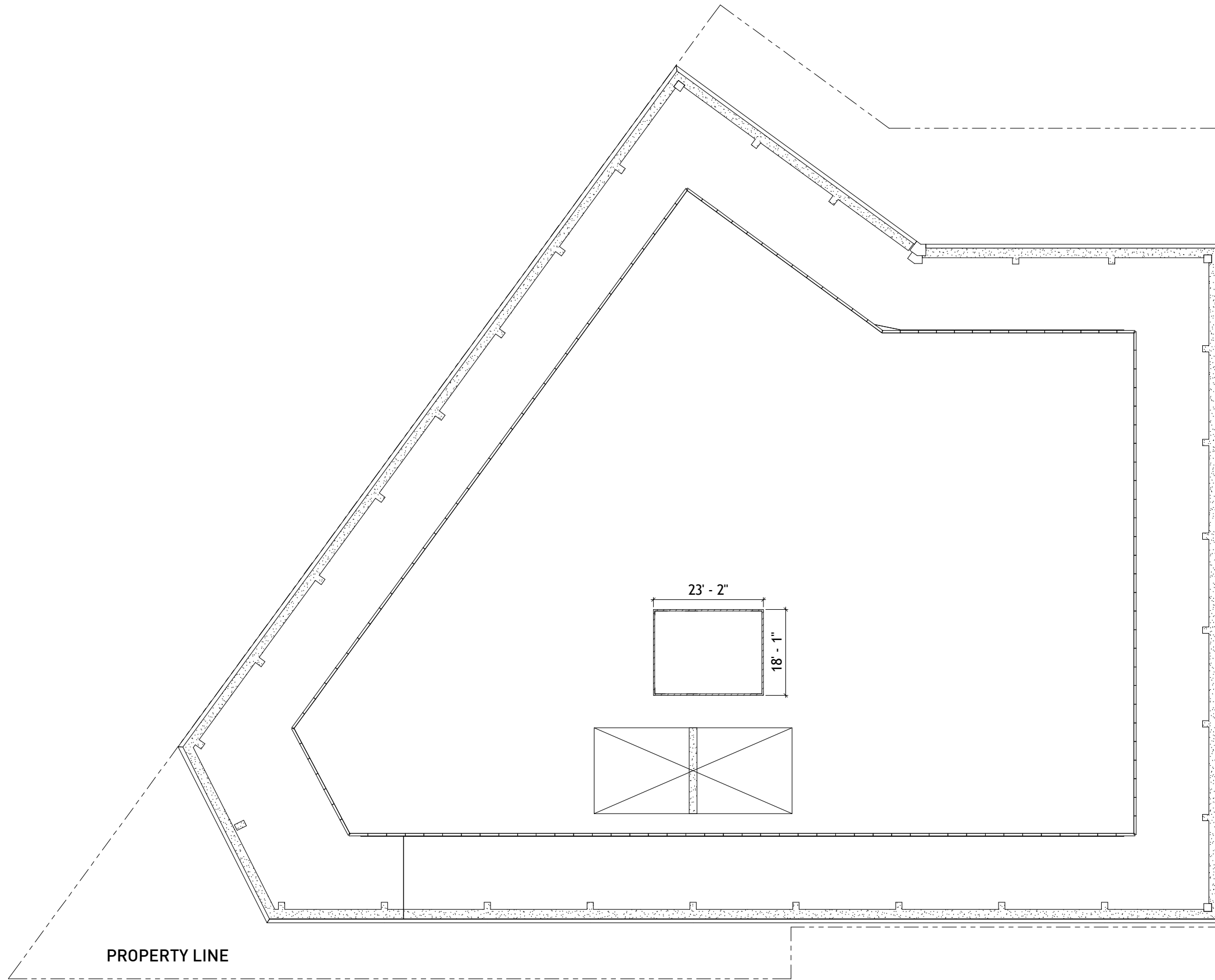


July 23, 2019



FOX Architects
1240 22nd Street, NW
Washington, DC 20037
T 202.659.0929

1333 New Hampshire Avenue



PROPERTY LINE

23' - 2"

18' - 1"

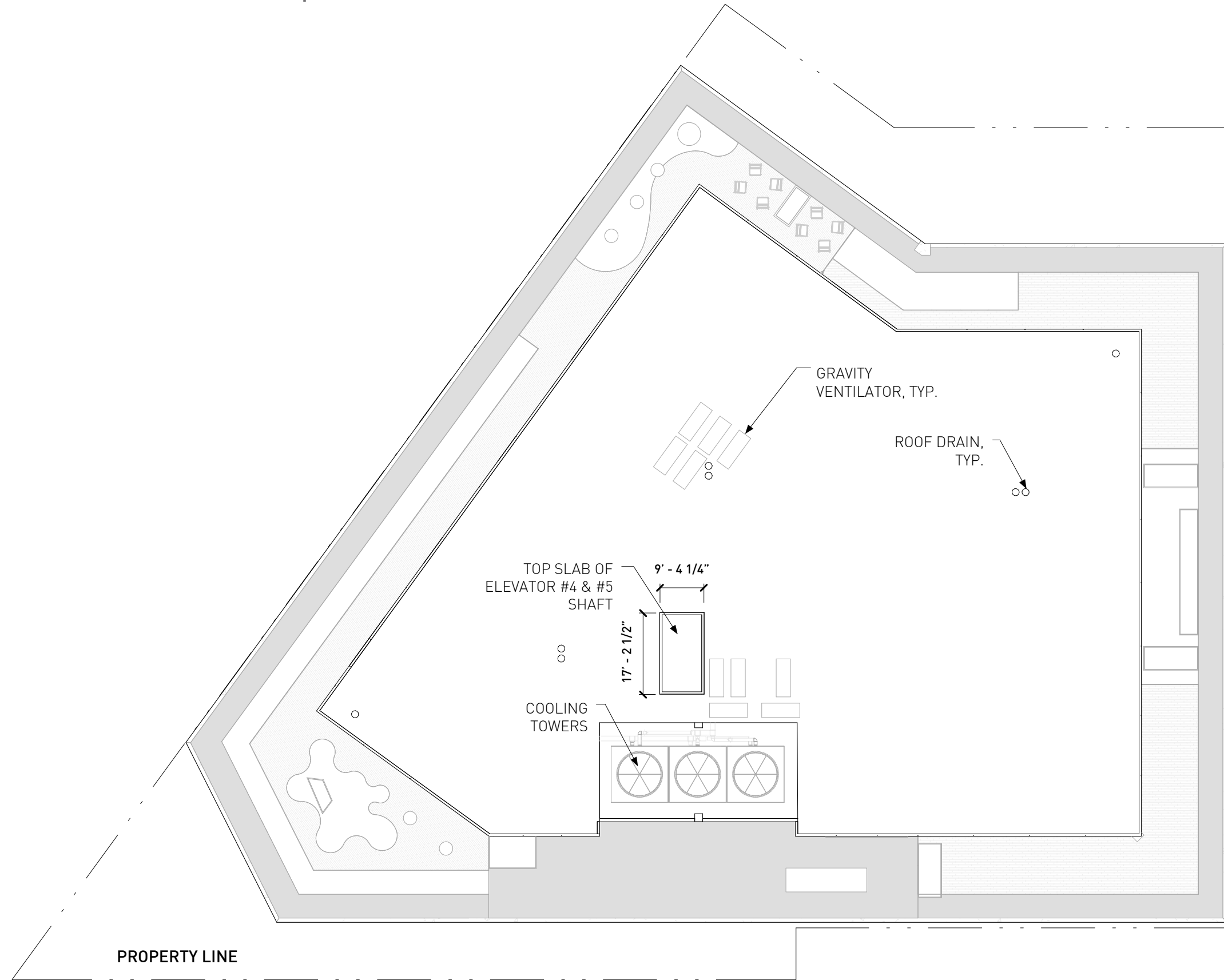
Exiting Penthouse Roof



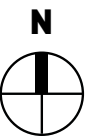
July 23, 2019



FOX Architects
1240 22nd Street, NW
Washington, DC 20037
T 202.659.0929



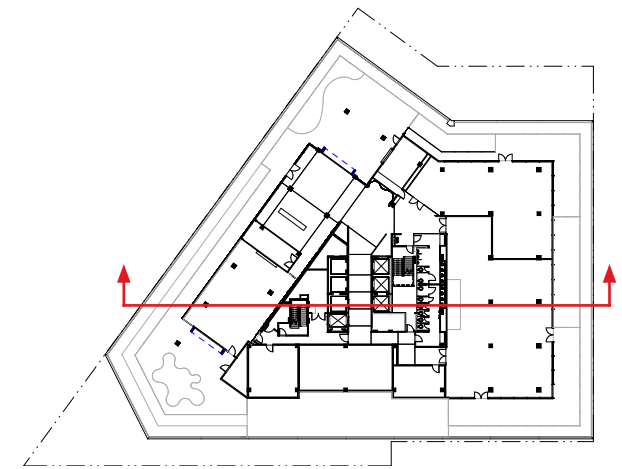
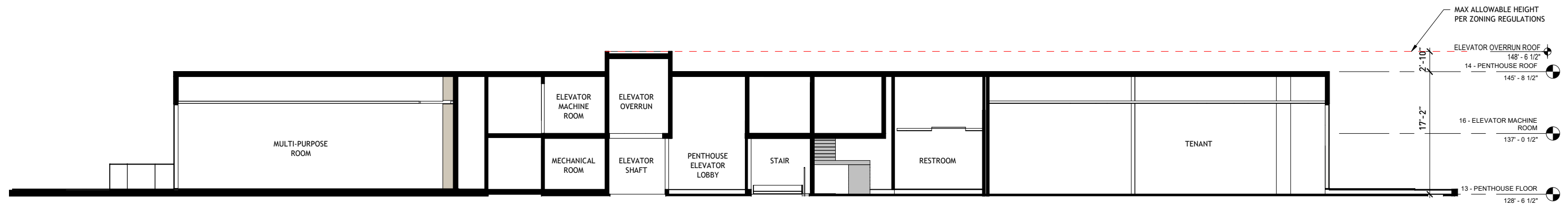
Proposed Penthouse



July 23, 2019



FOX Architects
1240 22nd Street, NW
Washington, DC 20037
T 202.659.0929

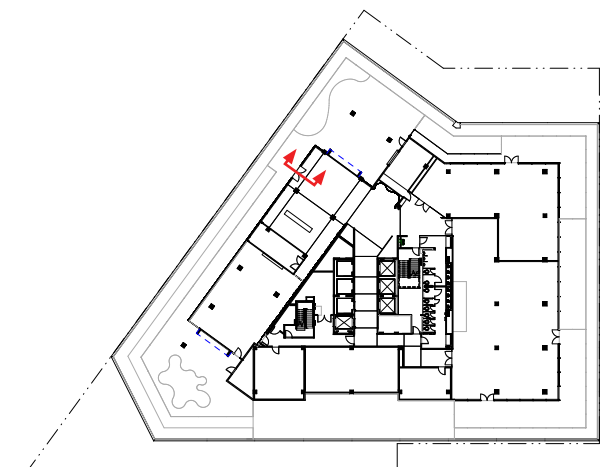
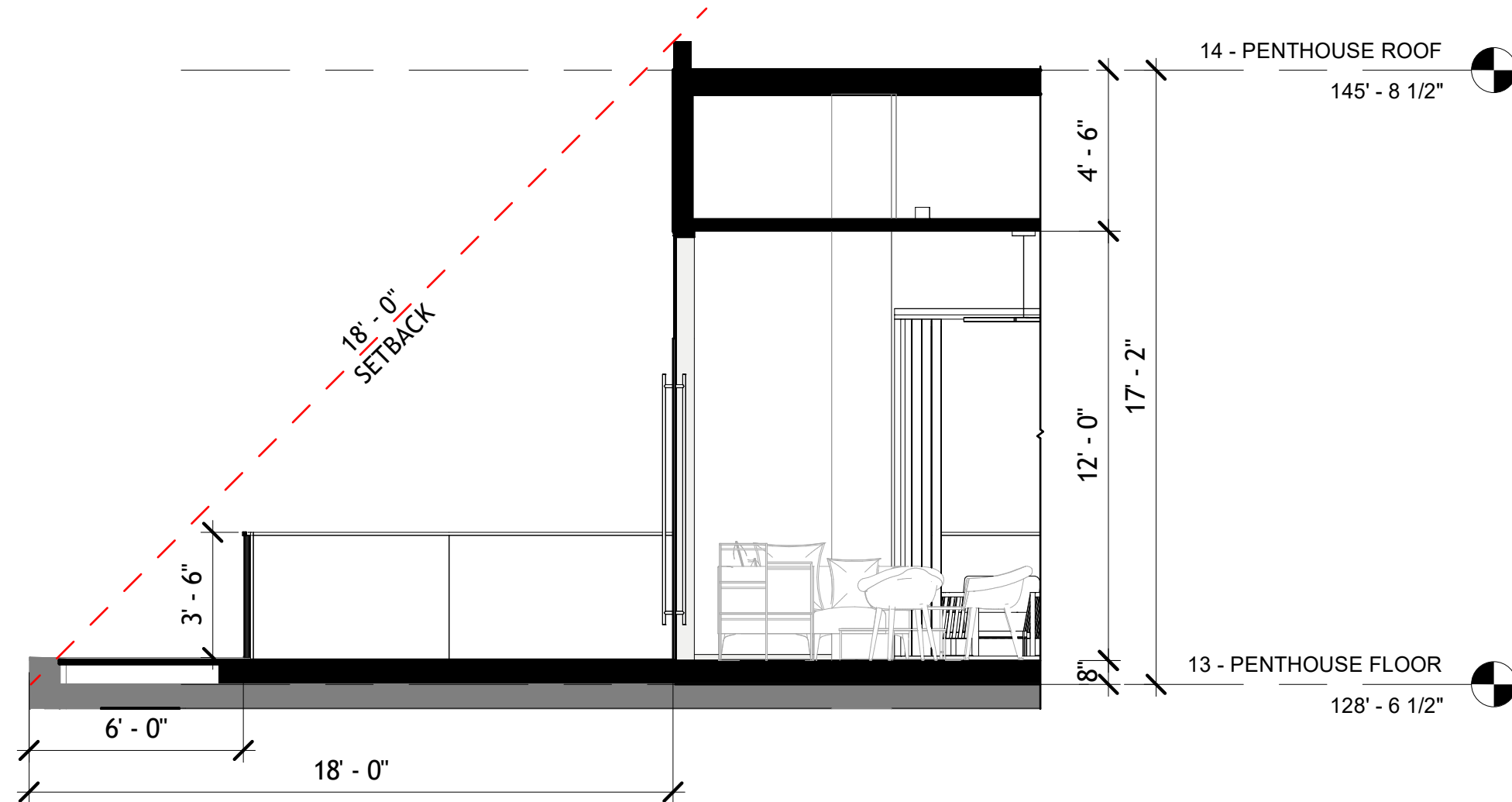


Key

Penthouse Elevator Overrun Section

July 23, 2019





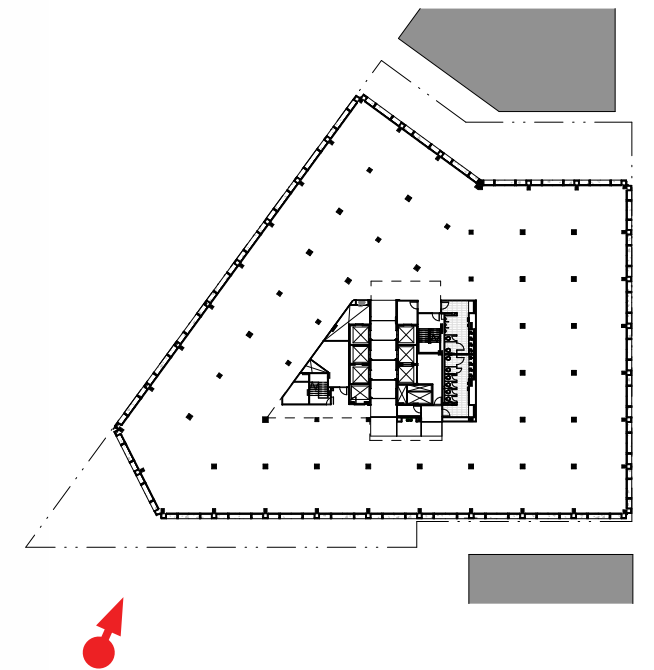
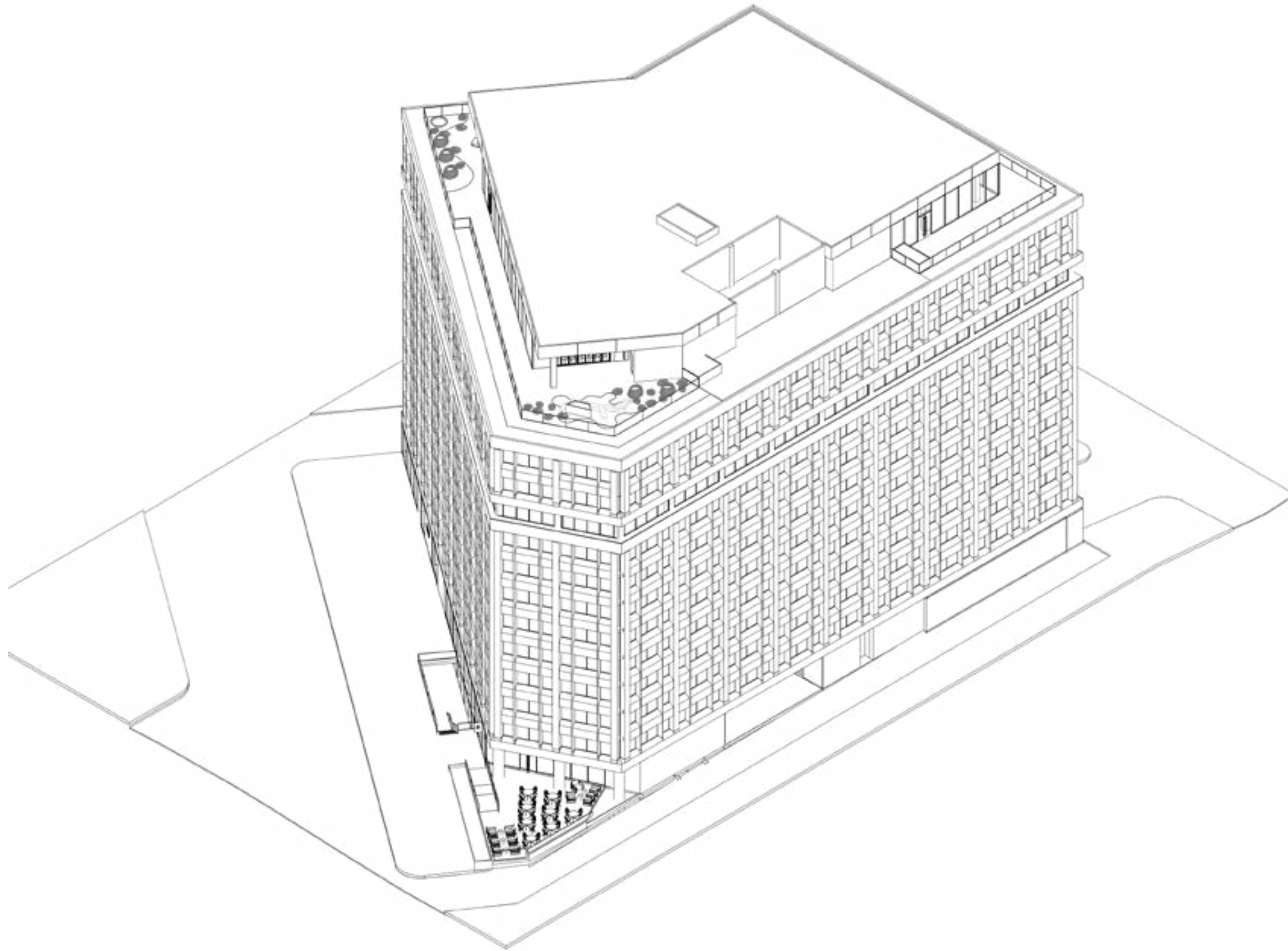
Key

Penthouse Exterior Section

July 23, 2019

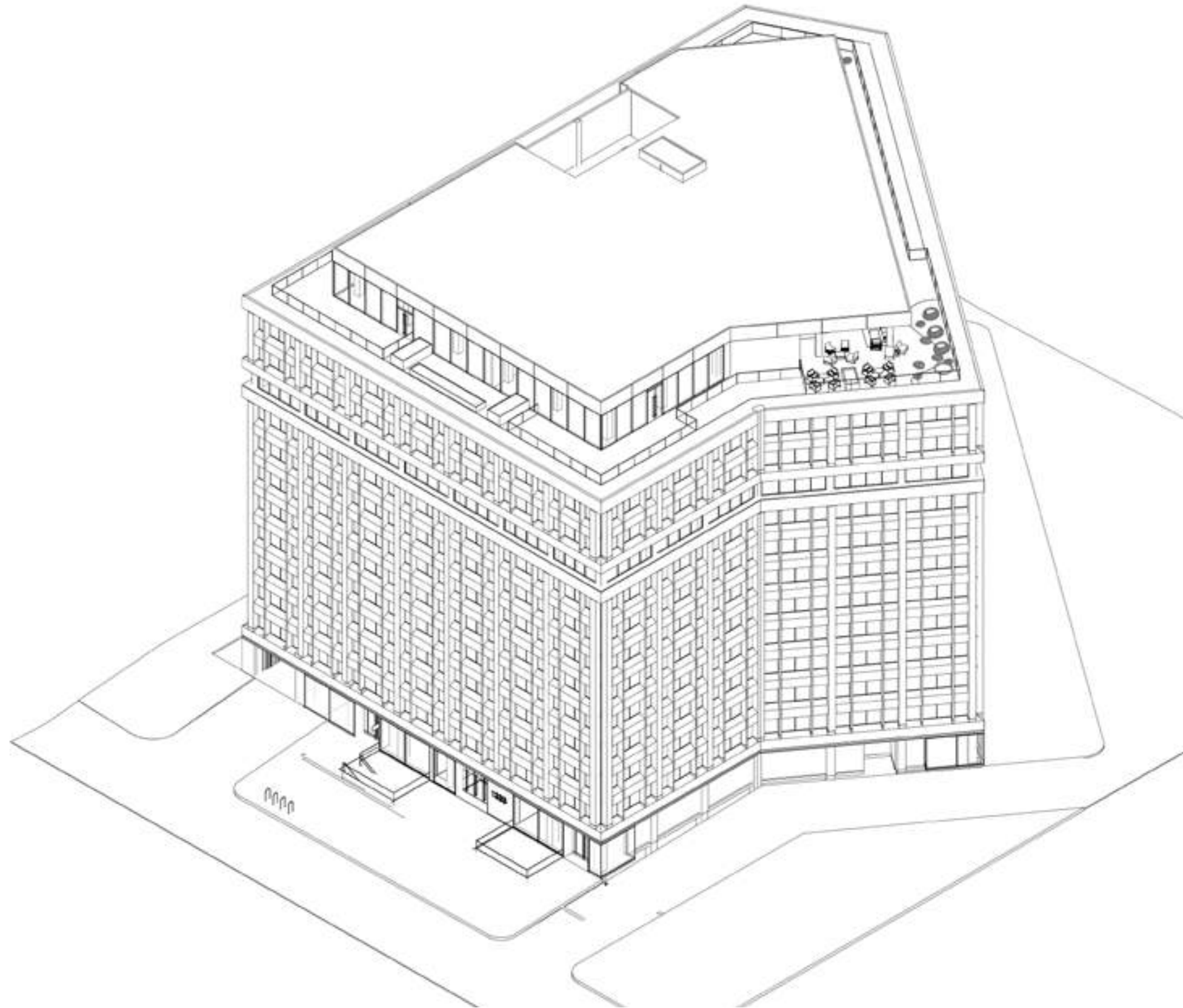


1333 New Hampshire Avenue

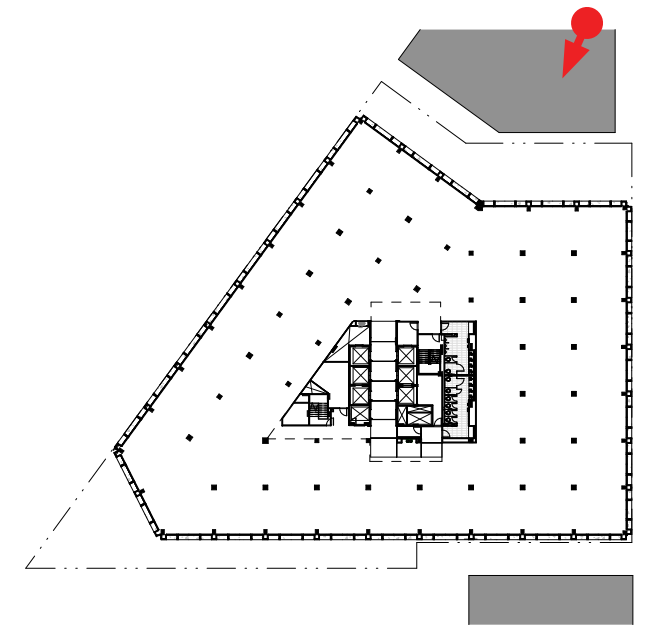


Key Plan: Typical Floor Plan

1333 New Hampshire Avenue



Axon - Northeast



Key Plan: Typical Floor Plan